

## SYM Metálica (WC)

Tungsten Carbide

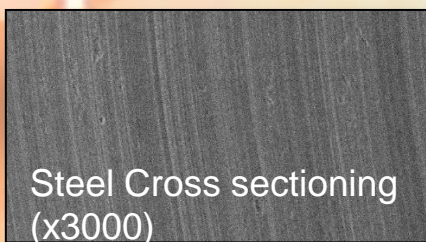
### for Microtome & Ultra Microtome



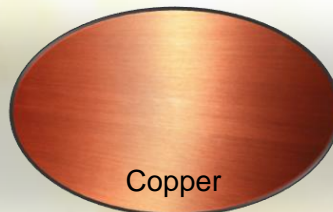
### Ideal for preprocessing of single metals\*

\*Iron, copper, aluminum, etc.

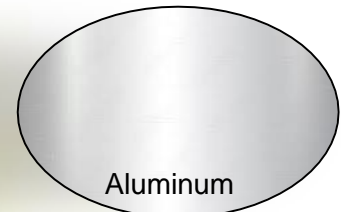
### Easily cuts large-sized samples



Steel Cross sectioning  
(x3000)



Copper



Aluminum

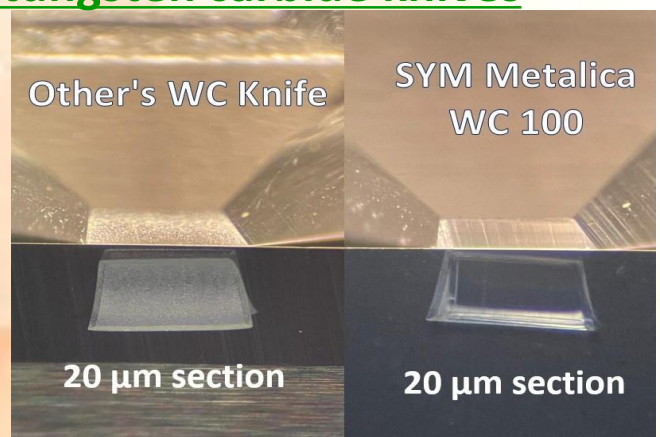
Images of cross sectioning

## Features of SYM Meálica

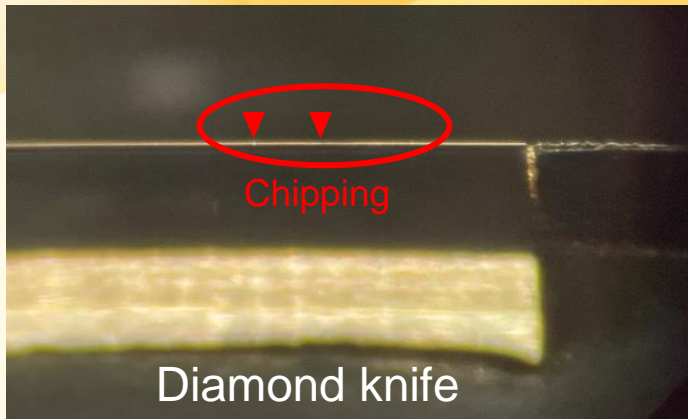
### Point 1: Sharper than existing tungsten carbide knives

The figure on the right shows this product and an existing carbide knife. These are comparison images of a 20 µm thick section of the same epoxy resin sample.

You can clearly see that the cut is clean and smooth.



## Point 2: Relatively cheaper than diamond, so ideal for cutting hard samples

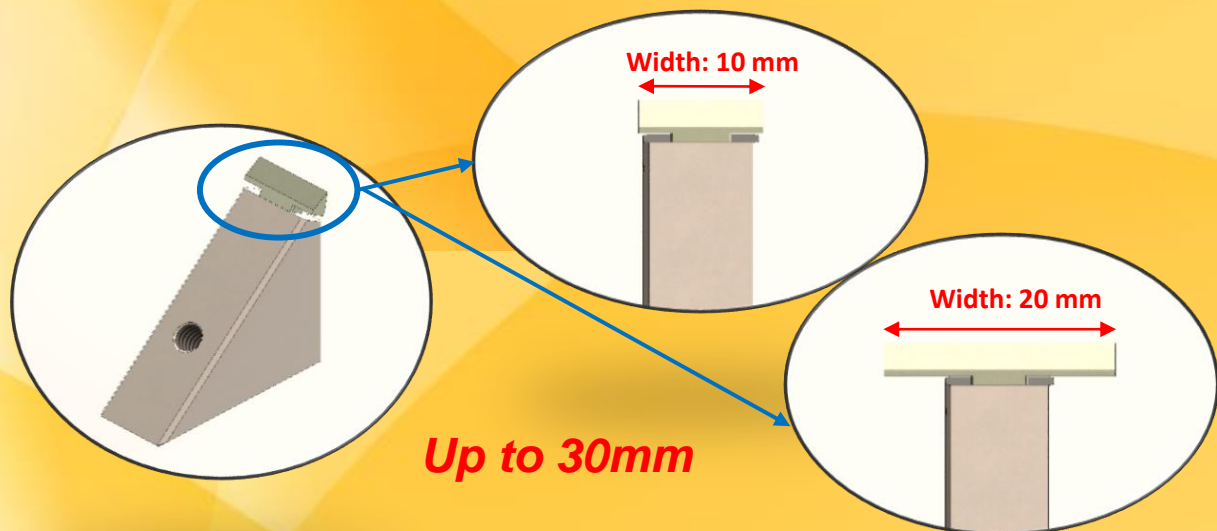


You may be hesitant to cut hard filler or metal with a diamond knife as there is a high possibility that the important knife will chip.

When using this product, there is a high possibility of chipping, but it is cheaper to sharpen and replace the blade than diamond.

Cross-sections and slices for observation can be easily and effortlessly achieved.

## Point 3: There are large blade widths



This knife has blade widths wide variety of ranges between 10 and 30 mm. You are available to cut even large samples that you had no choice but to give up.

## «Other points»

- Can be used with both rotary microtome\* and ultra microtome.
- \*A special stage (for glass knives) is required for use with a rotary microtome
- Higher durability than glass knives for trimming.
- It is possible to reduce preparation time.

Line-up of SYM Metálica

Item No.	Width	Blade Angle
WC100	10mm	45°
WC200	20mm	45°
WC300	30mm	45°

**More Useful and Convenient !**



SYNTEK CO., LTD (Japan)

